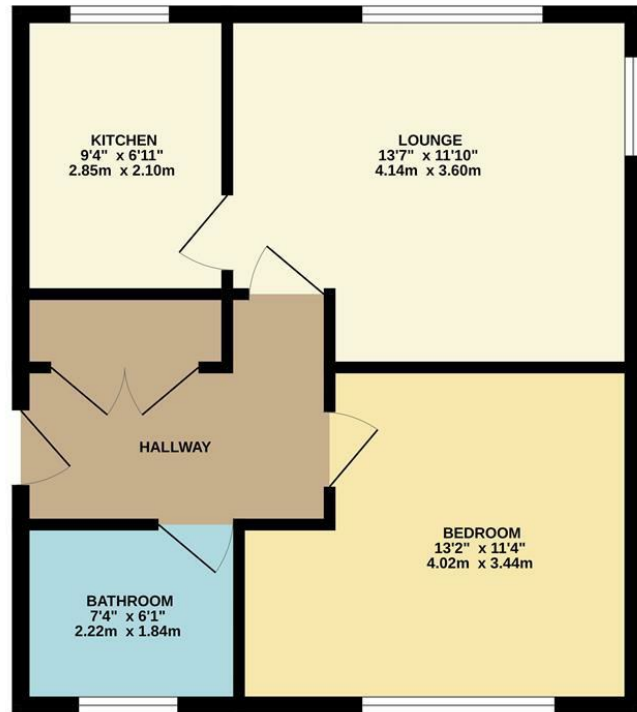


GROUND FLOOR  
473 sq.ft. (43.9 sq.m.) approx.



TOTAL FLOOR AREA : 473 sq.ft. (43.9 sq.m.) approx.  
Whilst every attempt has been made to ensure the accuracy of the floorplan contained here, measurements of doors, windows, rooms and any other items are approximate and no responsibility is taken for any error, omission or mis-statement. This plan is for illustrative purposes only and should be used as such by any prospective purchaser. The services, systems and appliances shown have not been tested and no guarantee as to their operability or efficiency can be given.  
Made with Metropix ©2025

17 Hertford Road, Stratford-Upon-  
£875 Per Month

charlesrose.



A beautifully presented ground floor one bedroom apartment located on Hertford Road in Stratford upon Avon.

Recently refurbished throughout with fresh paintwork, a brand new bathroom and new carpets, this home offers modern comfortable living within easy reach of local amenities and the town centre.

The accommodation comprises an entrance hall with a large cloaks cupboard, a bright living room, a fitted kitchen with integrated oven, washing machine and a fridge freezer, a double bedroom and a contemporary bathroom.

The property has gas central heating and there is an outside lockable store cupboard ideal for bike storage.

EPC Rating C.  
Council Tax Band B.  
Available on a minimum 12 month tenancy.  
Professionals only.  
Available now.

Holding Deposit £200  
Security Deposit £1000

charlesrose.

- 01926 832411
- hello@charlesrose.co.uk
- charlesrose.co.uk

